

# SENTINEL

LEV Testing & Support Pack



*"Protecting People and  
the Environment with  
Innovative Technology"*



# SENTINEL

## LEV Testing & Support Pack



### What is LEV Testing?

LEV or Local Exhaust Ventilation systems are designed to protect workers from hazardous dust and fumes. To ensure the systems are functioning correctly they need regular testing by a qualified person.

### What are the Health & Safety Laws?

The UK COSHH (Care of Substances Hazardous to Health) regulations 9.2 states that LEV control equipment must be tested, *"...in the case of local exhaust ventilation plant, at least once every 14 months..."*

### How Do I Get My LEV System Tested?

Choose a 1 or 3 year Purex Sentinel pack to ensure that your LEV system is tested on time every time. **Plus you also receive additional machine support benefits and we don't just LEV test Purex systems, we can test your whole site!**

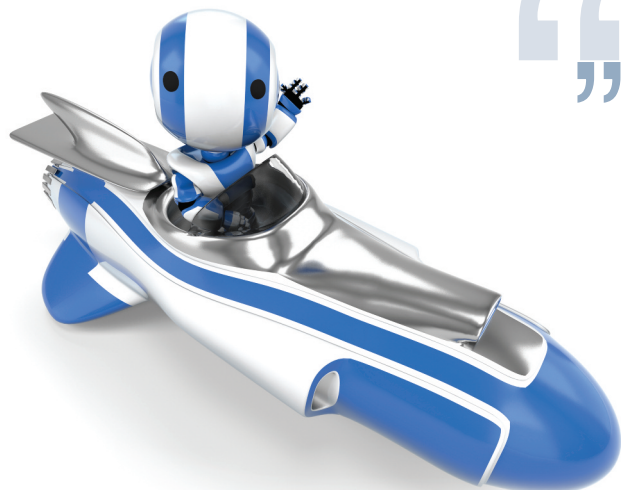
*\*In partnership with Total Extraction Solutions Ltd*



***An engineer will be on site within 24 hours of your support call if required.<sup>†</sup>***

***Up to HALF PRICE Filters with a 3 year Sentinel plan!***

***All LEV testing engineers are P601 or P602 qualified***



<sup>†</sup>3 year plan only. Not including weekends, UK mainland only.

## SENTINEL PACK OPTIONS

With the Purex LEV Testing & Support Pack you receive a host of benefits with a 1 or 3 year option as follows...

### Up to 1/2 Price Filters

On one set of filters per machine each year (If required).

**3  
Year  
Pack**

✓

**1  
Year  
Pack**

✗

### Annual LEV Testing

- Includes a full LEV test with a certificate supplied for your records.
- Plus an individual report and check list for each machine.
- Inflation proof! Prices fixed for the duration of the pack.
- Servicing of your system (If required).
- Operator training (If required).

✓

✓

✓

✓

✓

✓

✓

✗

✗

✗

### Machine Support

- 24/7 emergency telephone support.
- Support engineer on site the next day if required.\*
- Should a factory repair be required a slave machine can be despatched to your site to keep your process running.\*\*
- All factory repairs completed within one week.

✓

✓

✓

✓

✓

✗

✗

✗

### Replacement Parts

- a) Parts are chargeable at standard prices if Purex engineers fit them.
- b) Self Fit - Parts can be despatched the same day with a 15% discount and phone support will be provided if required.

✓

✓

✓

✗

### Extra Benefits

- Free application support/site visits for future projects.
- Additional discount on installation, commissioning and operator training.

✓

✓

✗

✗

\* Not including weekends, UK mainland only.

\*\* Does not include 1500i, 2000i or 5000i machines.

## INSTALLATION & COMMISSIONING

All LEV equipment should be designed, installed and commissioned by a P601/602 qualified person, Purex offer this service which also includes where appropriate:

- Connection Kits
- Pipework, hoses and ducting
- Pipework to workstation connections
- Tips, taps, arms, valves, capture hoods etc
- Minor electrical work
- Fixings and clips
- Free delivery on many units
- Removal of packaging
- Commissioning & Testing
- LEV Certification
- Operator Training
- Maintenance log book
- Installation labour
- Installation of filters

Price on application.



*"Protecting People and the Environment with Innovative Technology"*

**[www.purex.co.uk](http://www.purex.co.uk)**



**T:** +44 (0)1709 763000

**F:** +44 (0)1709 763001

**E:** [purex@purex.co.uk](mailto:purex@purex.co.uk)

Registered Office. Purex International Ltd. Purex House, Farfield Park,  
Manvers, Rotherham, S63 5DB. Registered No. 5136616 England.  
VAT No. GB842 5025 49 • WEEE Producer Registration Number: WEE/CE0067TX

