



Fume Cube

Recirculating fume extraction is now extremely important with the rising concern for our environment and employee safety. Purex Fume Extractors provide not only a flexible and portable process for plant redesigns and expansions, but also a more stable process by providing a controlled airflow to remove harmful fumes. All this while eliminating the added costs of building modifications, increased air handling systems and lost energy.

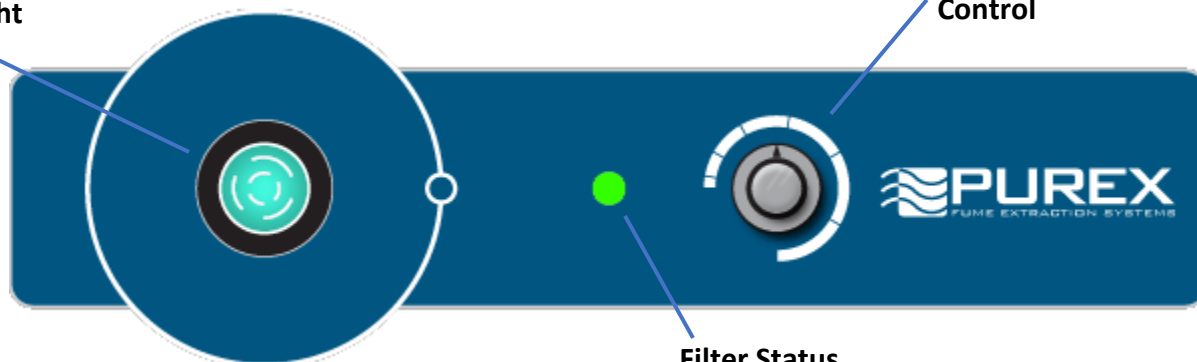
Purex Systems

- ❖ Automatic Flow Control maintains constant extraction rate
- ❖ Adjustable Air Flow extends filter life
- ❖ Blocked Filter Warning
- ❖ Easy to change filters
- ❖ Quiet operation
- ❖ Reverse Air Flow prevents condensation and extends filter life
- ❖ HEPA filtration removes 99.997% of particles down to .3 microns
- ❖ Gas and particle sensors on exhaust
- ❖ Filter Blocked Monitor
- ❖ Remote Machine Interface
- ❖ Welded stainless steel construction
- ❖ Continuous run brushless motors
- ❖ Low energy consumption

FumeCube

Power Switch w/
Indicator Light

Variable Speed
Control



Filter Status
Indicator

Main Filter Options



HEPA/Chemical	110536 Δ
Chemical	110537
HEPA Chemical Cleanroom*	110538
Solvent Lock	110543

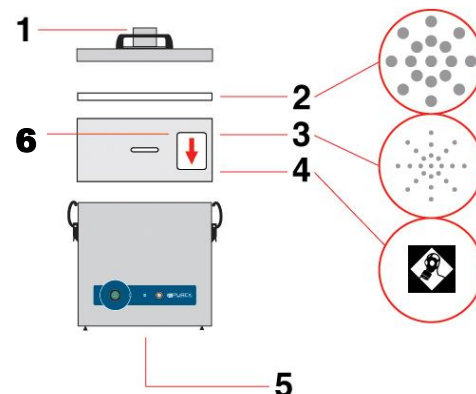
*Use F8/F9 Pre-filter

Pre-Filter



F5 (4pk)	200225 Δ
F6 (4pk)	200226
F8/F9 (4pk)	200316

Δ Standard Filter Supplied



- 1) Dual Air inlet
- 2) Pre-filter
- 3) Main filter (HEPA Location)
- 4) Main filter (Carbon Location)
- 5) Clean air return
- 6) Filter I.D. label

	FumeCube	
Model	072067	072065
Voltage (50hz/60Hz)	120v (1ph)	230v (1ph)
Wattage	2.4 kW	.14 kW
Airflow	112 cfm (190 m ³ /Hr)	
Vacuum	13 inwg (3.2 kPa)	
Air Inlet	Dual 57mm I.D./62mm O.D.	
-Sound Rating	60 dBA	
Dimensions (L/W/H)	12.15in x 12in x 14.5in	
Weight	37.5 lbs	

Ships with Standard 38mm Stainless Arm Kit Including:

- 1- 51mm x 2m flexible hose w/ connecting cuffs
- 1-Clamped Bracket
- 1-SS Flexible arm and valve
- 1-SS slim nozzle
- 1-SS conical cowl
- 1-Plug for 2nd air inlet



Order #100295 for additional arm kit